

**KRT28 Antibody (C-term)**  
**Affinity Purified Rabbit Polyclonal Antibody (Pab)**  
**Catalog # AP16179b****Specification**

---

**KRT28 Antibody (C-term) - Product Information**

Application	WB,E
Primary Accession	<a href="#">Q7Z3Y7</a>
Other Accession	<a href="#">NP_853513.2</a>
Reactivity	Human
Host	Rabbit
Clonality	Polyclonal
Isotype	Rabbit IgG
Calculated MW	50567
Antigen Region	432-460

**KRT28 Antibody (C-term) - Additional Information****Gene ID** 162605**Other Names**

Keratin, type I cytoskeletal 28, Cytokeratin-28, CK-28, Keratin-25D, K25D, Keratin-28, K28, Type I inner root sheath-specific keratin-K25irs4, KRT28 (<a href="http://www.genenames.org/cgi-bin/gene\_symbol\_report?hgnc\_id=30842" target="\_blank">HGNC:30842</a>)

**Target/Specificity**

This KRT28 antibody is generated from rabbits immunized with a KLH conjugated synthetic peptide between 432-460 amino acids from the C-terminal region of human KRT28.

**Dilution**

WB~~1:1000

E~~Use at an assay dependent concentration.

**Format**

Purified polyclonal antibody supplied in PBS with 0.09% (W/V) sodium azide. This antibody is purified through a protein A column, followed by peptide affinity purification.

**Storage**

Maintain refrigerated at 2-8°C for up to 2 weeks. For long term storage store at -20°C in small aliquots to prevent freeze-thaw cycles.

**Precautions**

KRT28 Antibody (C-term) is for research use only and not for use in diagnostic or therapeutic procedures.

**KRT28 Antibody (C-term) - Protein Information**

**Name** KRT28 ([HGNC:30842](#))

**Function** Essential for the proper assembly of types I and II keratin protein complexes and the formation of keratin intermediate filaments in the inner root sheath (irs).

**Cellular Location**

Cytoplasm {ECO:0000250|UniProtKB:A6BLY7}.

**Tissue Location**

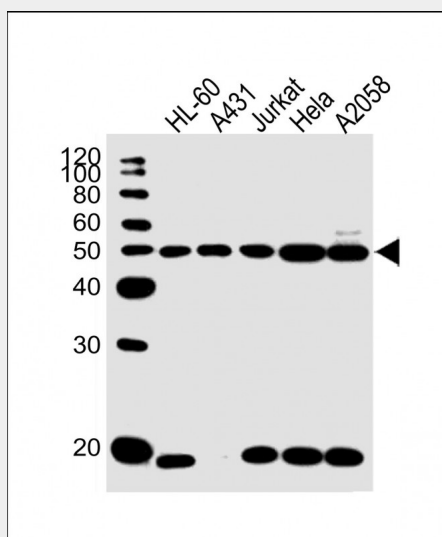
Strongly expressed in skin and scalp, and weak expression observed in thymus. In the hair follicle, expressed in Henle layer, Huxley layer and in the irs cuticle. Expression extends from the bulb region up to the point of differentiation into the three layers Also present in the medulla of beard hair (at protein level)

**KRT28 Antibody (C-term) - Protocols**

Provided below are standard protocols that you may find useful for product applications.

- [Western Blot](#)
- [Blocking Peptides](#)
- [Dot Blot](#)
- [Immunohistochemistry](#)
- [Immunofluorescence](#)
- [Immunoprecipitation](#)
- [Flow Cytometry](#)
- [Cell Culture](#)

**KRT28 Antibody (C-term) - Images**



All lanes : Anti-KRT28 Antibody (C-term) at 1:1000 dilution Lane 1: HL-60 whole cell lysate Lane 2: A431 whole cell lysate Lane 3: Jurkat whole cell lysate Lane 4: HeLa whole cell lysate Lane 5: A2058 whole cell lysate Lysates/proteins at 20 µg per lane. Secondary Goat Anti-Rabbit IgG, (H+L), Peroxidase conjugated at 1/10000 dilution. Predicted band size : 51 kDa Blocking/Dilution buffer: 5% NFDM/TBST.

**KRT28 Antibody (C-term) - Background**

This gene encodes a member of the type I (acidic) keratin family, which belongs to the superfamily of intermediate filament (IF) proteins. Keratins are heteropolymeric structural proteins which form the intermediate filament. These filaments, along with actin microfilaments and microtubules, compose the cytoskeleton of epithelial cells. The type I keratin genes are clustered in a region of chromosome 17q12-q21.

#### **KRT28 Antibody (C-term) - References**

Schweizer, J., et al. J. Cell Biol. 174(2):169-174(2006)  
Rogers, M.A., et al. Differentiation 72 (9-10), 527-540 (2004) :